

Inshore Operations

www.infomar.ie

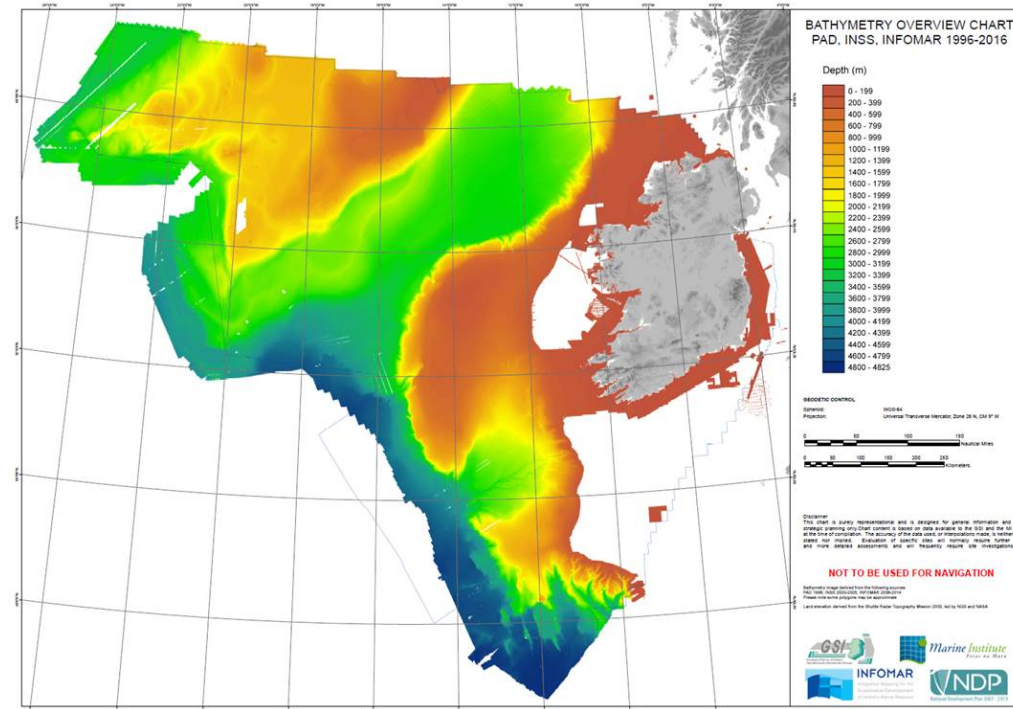
Sean Cullen

Geological Survey Ireland

Global Projects



- North Atlantic Mapping Initiative
 - NAGTEC
 - IWDDS
 - GEBCO
 - Seabed mapping consultancy
-
- Coverage as of end 2016....

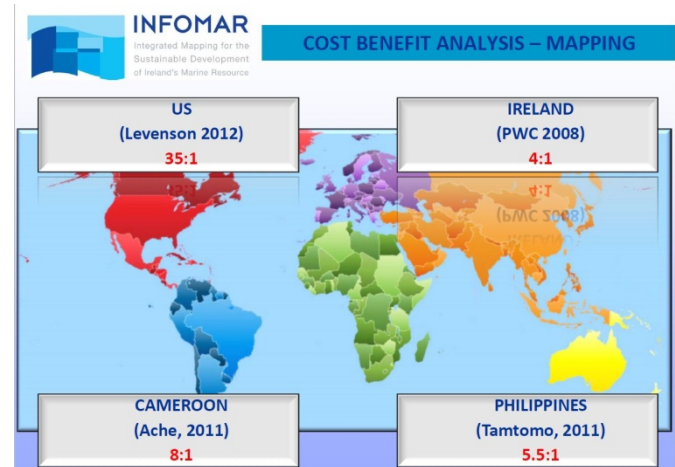


EU Projects

- EMODnet HRSM (Sean and Grainne)
- EMODnet Geology (Janine and Maria)
- EMODnet Coastal Mapping Completed Jan 17.
- CHERISH (Cathal and James)
- CBEAM unsuccessful but INISHydro partners bidding on 'SEARCH'



EMODnet
Coastal
presented at EU
Parliament



CHERISH

EU Funds: Ireland Wales Co-operation Programme 2014-2020



CHERISH

Newid Hinsawdd a Threftadaeth yr Arfordir
Climate Change and Coastal Heritage
Athrú Aeráide agus Oidhrecht Chultúrtha

Direct Delivery by Beneficiaries

Overall operation value:

€5,183,913

Total ERDF grant:

€4,144,836

Royal Commission on the Ancient and Historical
Monuments of Wales,
Geological Survey, Ireland,
The Discovery Programme, Ireland,
DGES Aberystwyth University

“Understanding
climate, risk and
the remote heritage
of the Irish Sea Zone”

EXECUTIVE SUMMARY

Aligned with Priority
Axis 2:

Adaptation of the Irish Sea and
Coastal Communities to
Climate Change

Specific Objective 2:

To increase capacity and
knowledge of climate change
adaptation for the Irish Sea
and coastal communities



Comisiwn Brenhinol
Henebion Cymru
Royal Commission on the Ancient
and Historical Monuments of Wales



Geological Survey
Suirbhéireacht Gheolaíochta
Ireland | Éireann



The Discovery
Programme
Centres for Archaeology
and Innovation Ireland



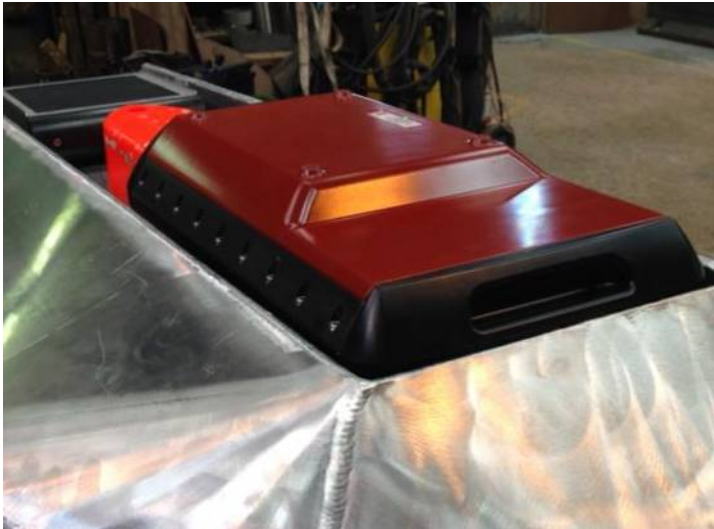
1872 PRIFYSGOL
ABERYSTWYTH
UNIVERSITY



RV Mallet







Geo-Resources Sparker 200



WWW.MGMBOATS.COM

SALES & SERVICE

280202

KEARY

10





INFOMAR Seminar

11/12th October 2012

UCC

Cork

Policy ; Categorisation and Co=operation

Sean Cullen (INFOMAR)



2012

RV Lir



RV Geo

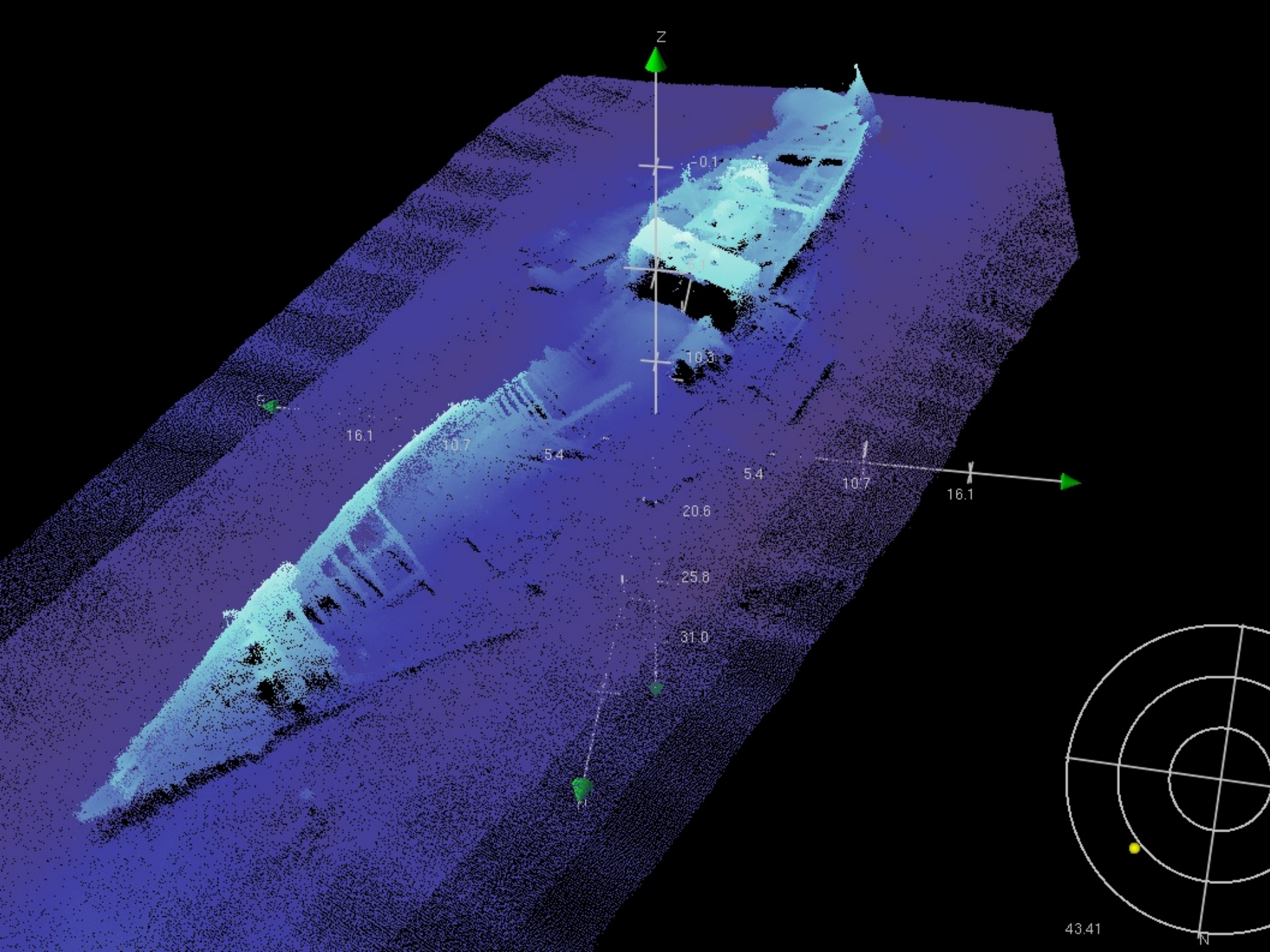


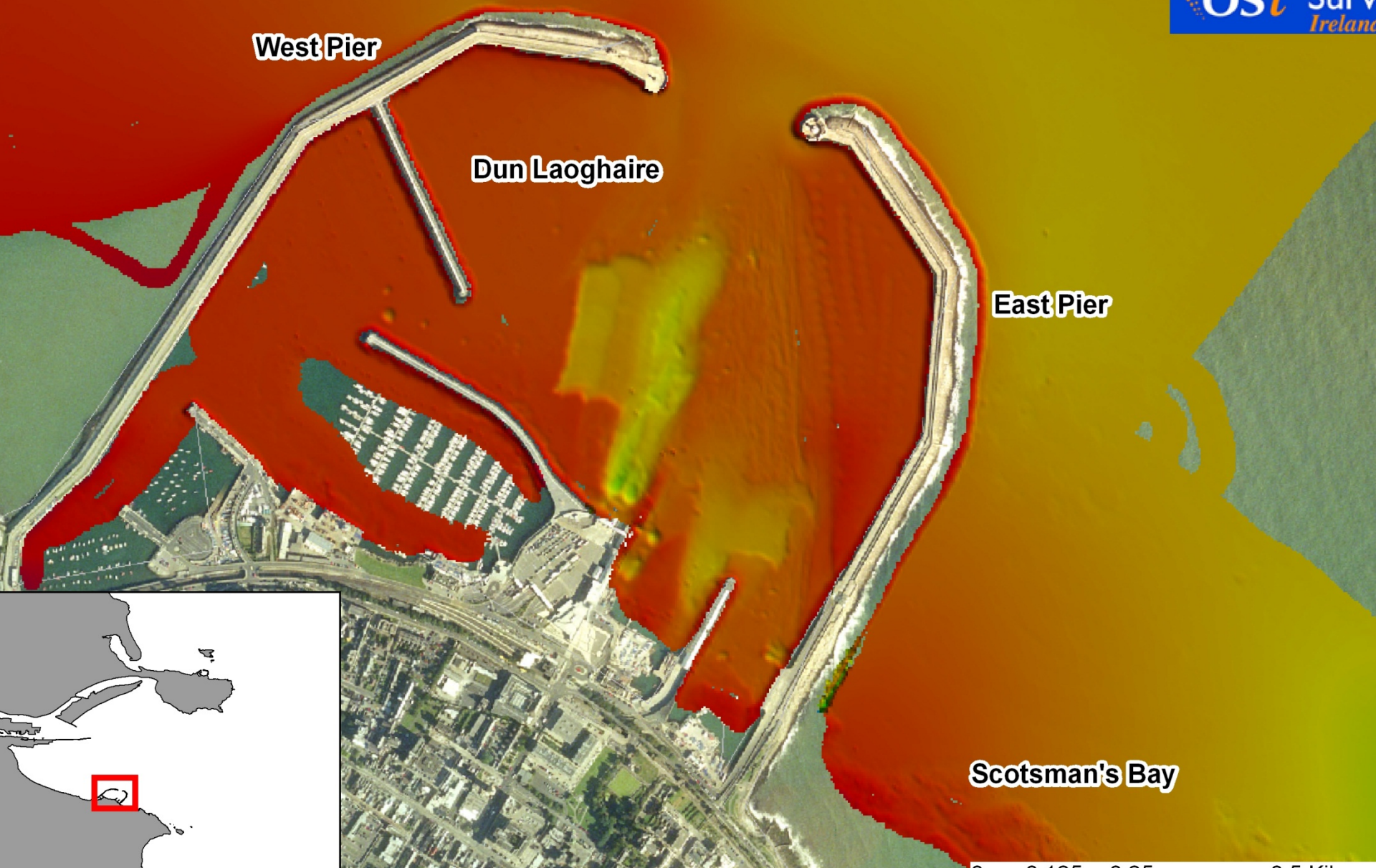
Working Together



INFOMAR

Integrated Mapping for the
Sustainable Development
of Ireland's Marine Resources





West Pier

Dun Laoghaire

East Pier

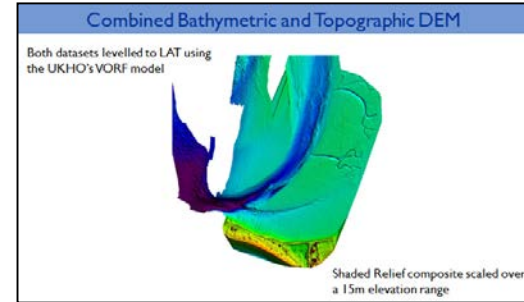
Scotsman's Bay

Key Challenges for Phase 2: 2016-2026

Maintaining Best Practice

(while assessing development of...)

- Autonomous Vehicles UAVs/USVs
- Photogrammetry
- Marine LiDAR
- Hyper-Spectral Imagery
- Satellite Bathymetry



Geoscience Research Programme

- GSI-led Geoscience Short Call Projects Supporting R&D in these areas

Emerging Technologies

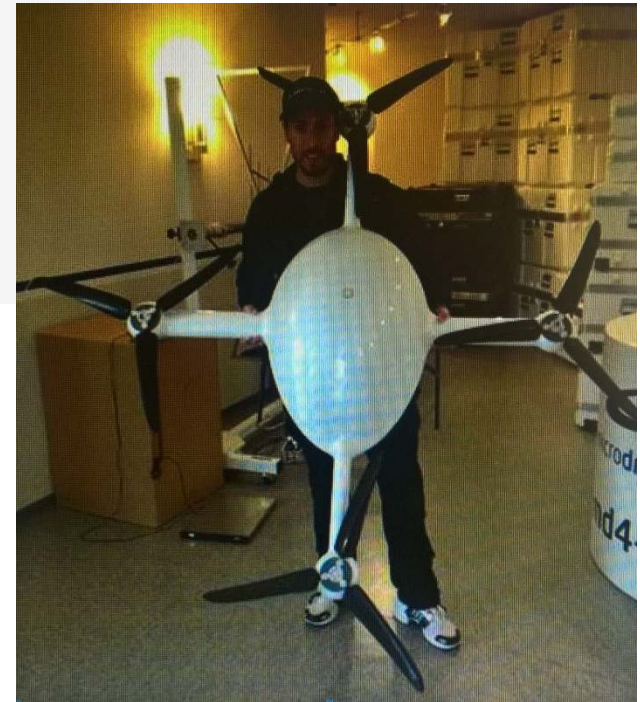
DJI INSPIRE (FLIR Thermal) Camera)

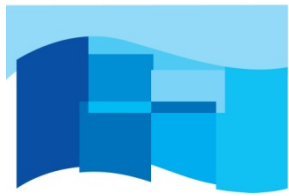


UAVs – Rotary Systems



- Multiple Payloads
- 20m/s Wind Tolerance
- 45 minute Endurance
- VTOL - Flexibility

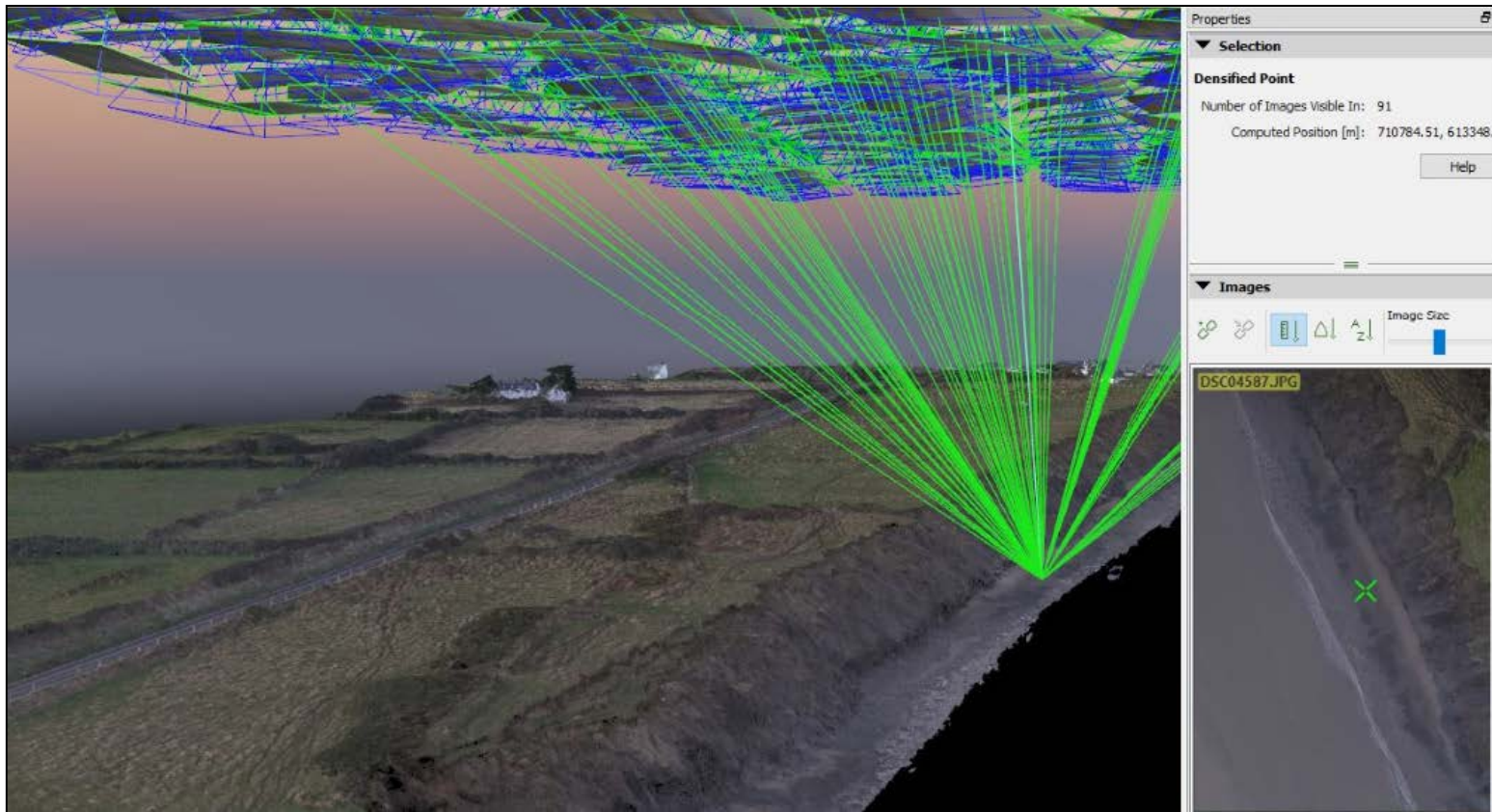




INFOMAR

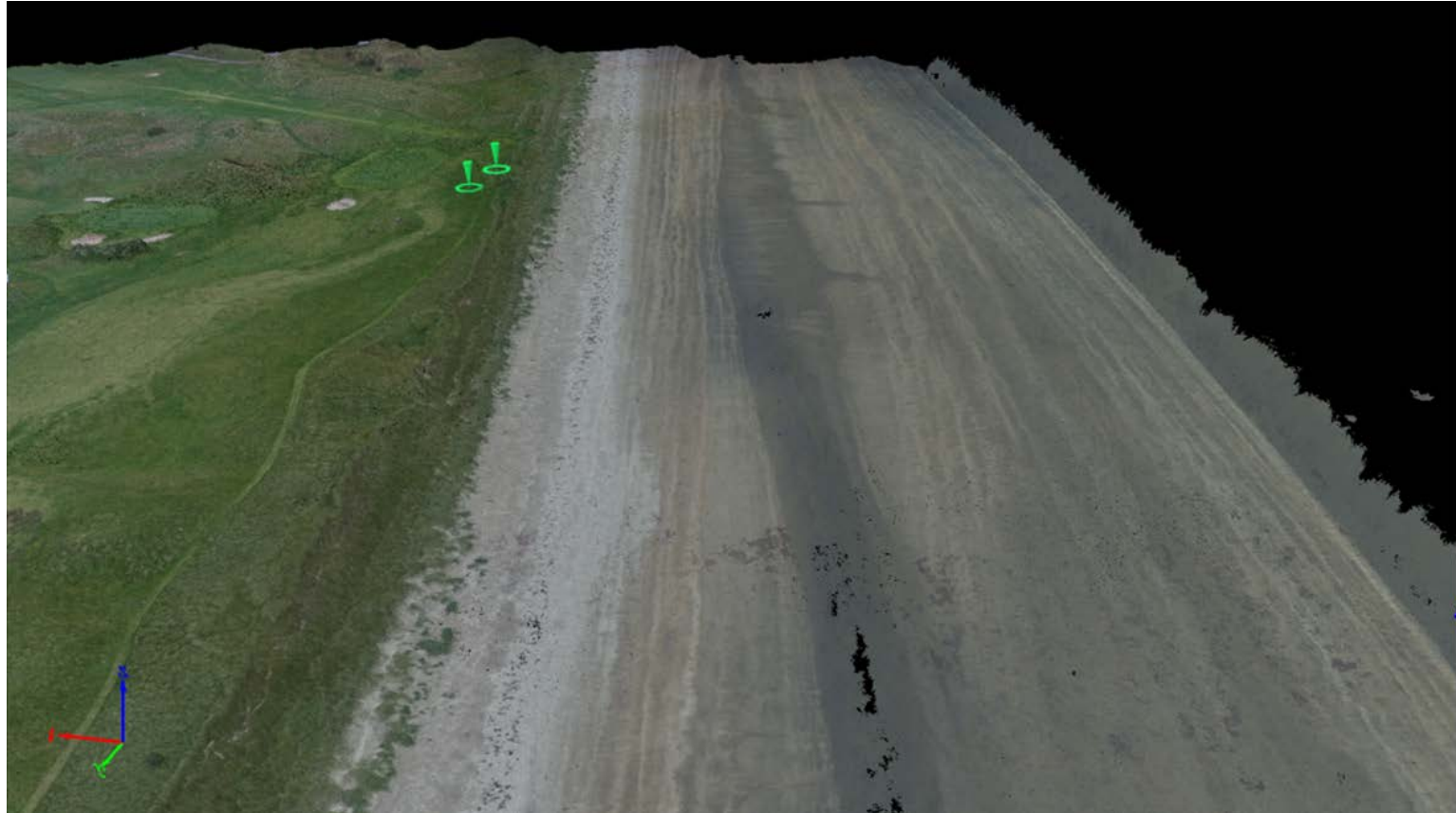
Integrated Mapping for the
Sustainable Development
of Ireland's Marine Resource

Safety Aspect: Rosslare Co. Wexford

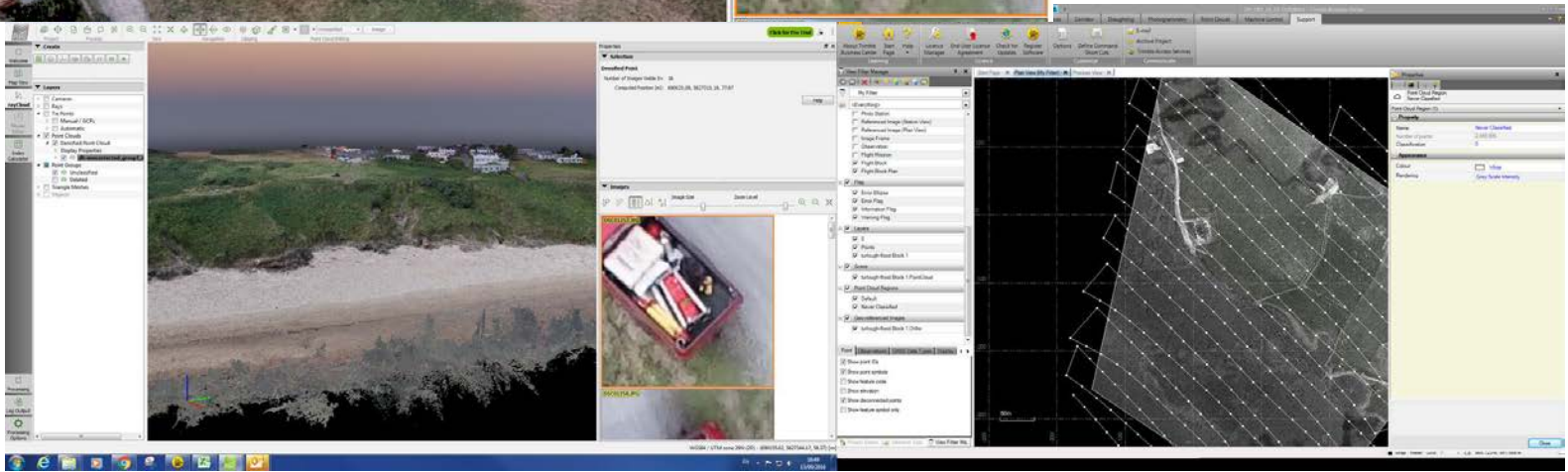


Cliff Subsidence Mapped Safely to 5cm Resolution

UAVs – Trimble UX5 HP Fixed Wing



Trimble UX5HD coastal data

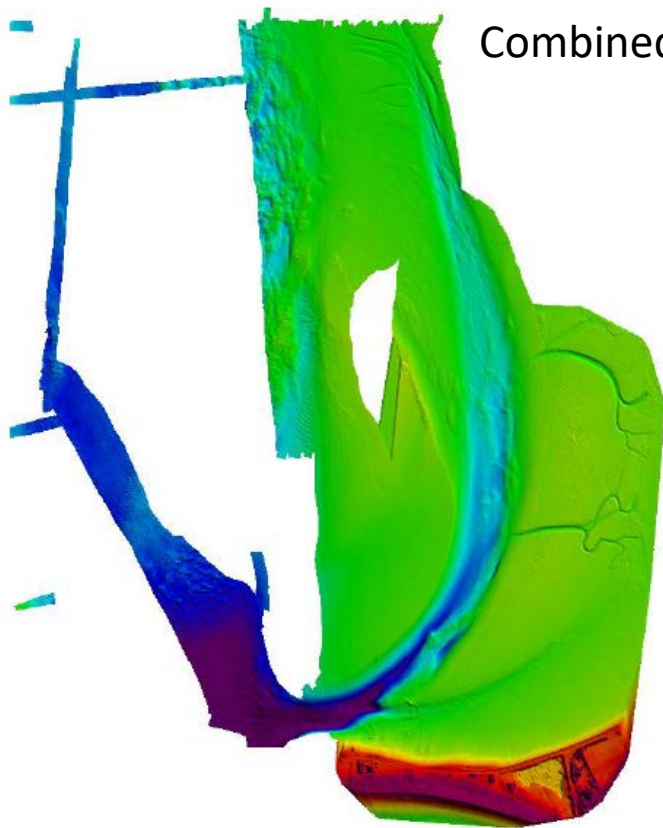




INFOMAR

Integrated Mapping for the
Sustainable Development
of Ireland's Marine Resource

Test Site: Youghal Harbour, Co. Cork



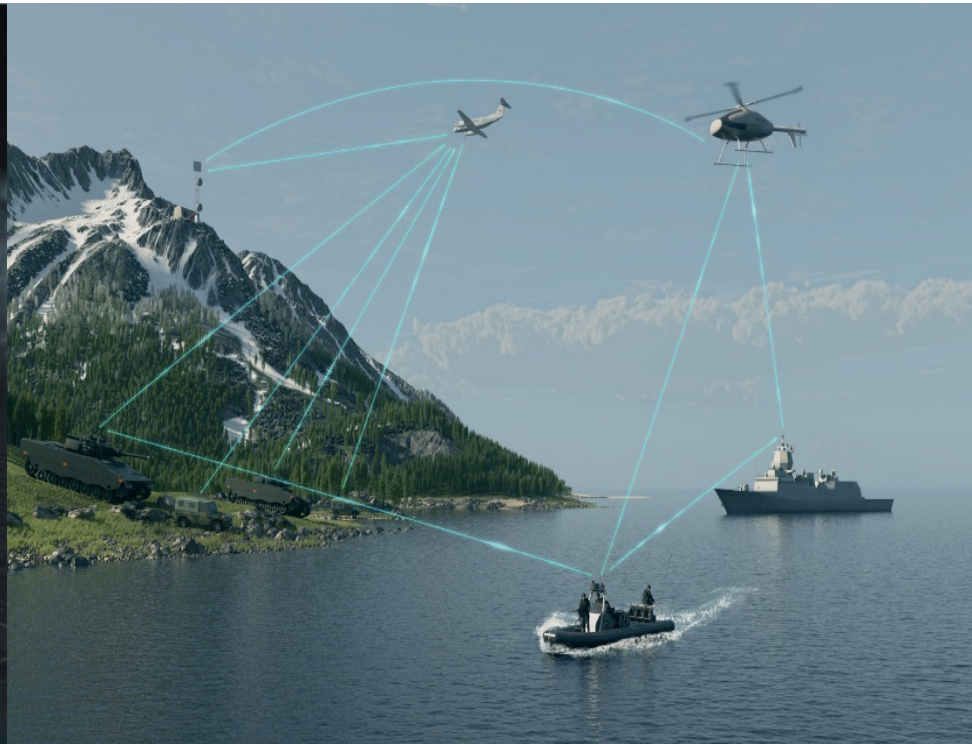
Combined DEM Bathymetry and Topography



Test Area - Inter-tidal zone



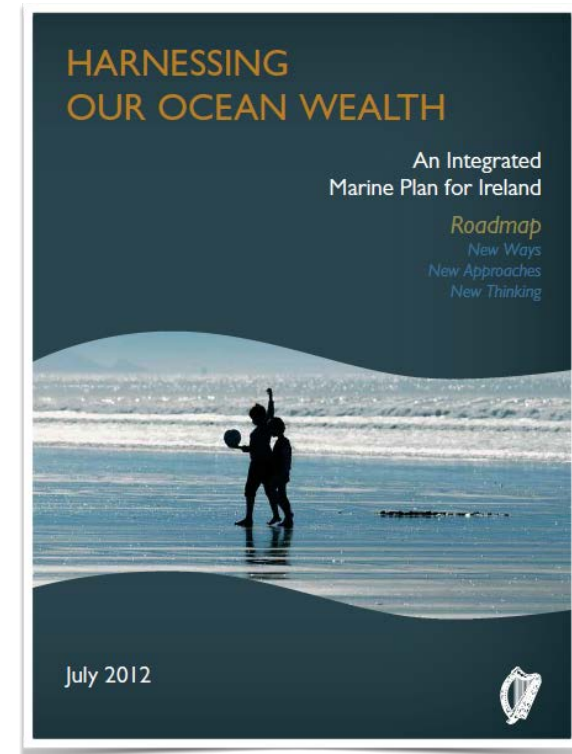
MBR, a Revolution in Maritime Communication



Key Challenges for Phase 2: 2016-2026

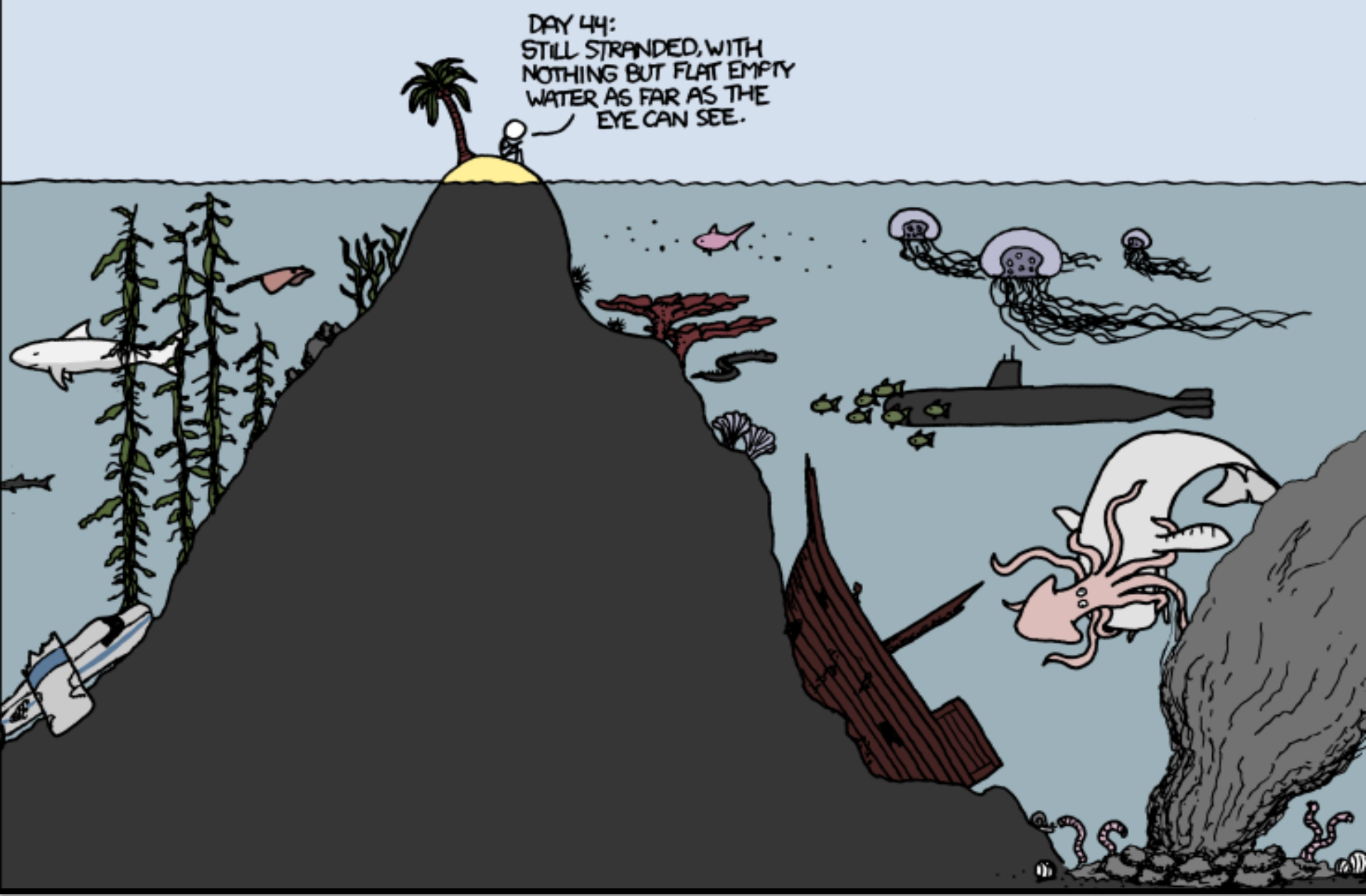
Evolving Policy and Regulatory Landscape

- Ensuring INFOMAR remains aligned with National Goals
- EU Policy
 - 2008 Marine Strategy Framework Directive
 - 2014 Marine Spatial Planning Directive
 - Towards an Integrated EU Maritime Policy
- INFOMAR recognised as a Key Enabler of Ireland's Integrated Marine Plan (Harnessing Our Ocean Wealth 2012)
- Brexit Uncertainty



Evolving Regulatory Landscape

DAY 44:
STILL STRANDED, WITH
NOTHING BUT FLAT EMPTY
WATER AS FAR AS THE
EYE CAN SEE.



THANK YOU – Questions?